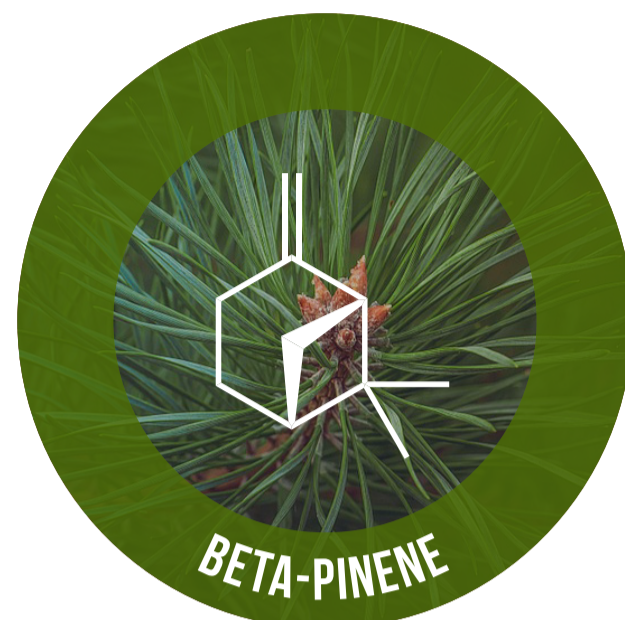
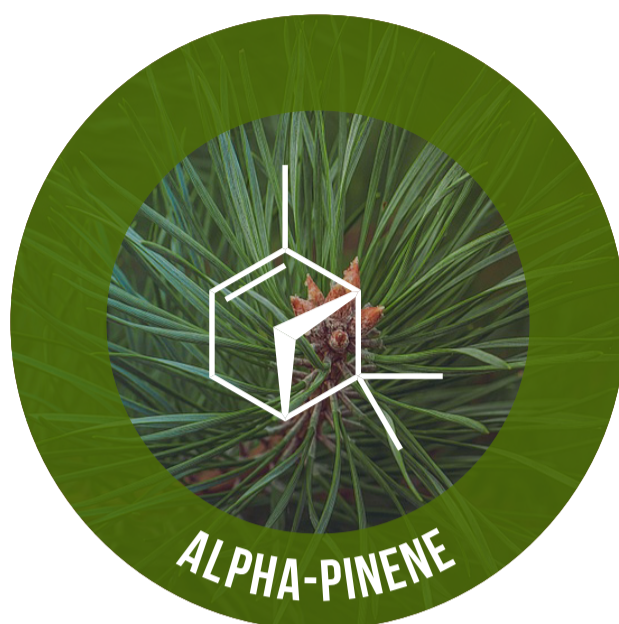


THE AROMA OF CHRISTMAS TREES



BORNYL ACETATE

FORMULA
C₁₂H₂₀O₂

CLASS OF COMPOUND
Ester

ABOUT

Found in volatile oils of conifers, particularly silver pines and balsam firs, and has a clean, pine-like odour. The use of silver pines as Christmas trees has declined, but balsam firs are popular in the United States.

ALPHA-PINENE

FORMULA
C₁₀H₁₆

CLASS OF COMPOUND
Terpene

ABOUT

Alpha-pinene has a turpentine-like odour, and is found in volatile oils of many different species of pine tree. It has two enantiomers; one is more common in European pines, the other more common in North American pines.

BETA-PINENE

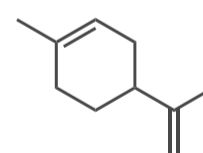
FORMULA
C₁₀H₁₆

CLASS OF COMPOUND
Terpene

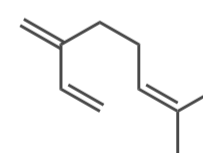
ABOUT

An isomer of alpha-pinene, beta-pinene is a major compound emitted by forest trees. It has a fresh, woody, turpentine-like smell. Both pinene isomers are flammable, hence why pine cones & Christmas trees burn well.

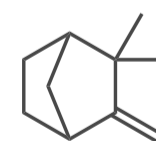
OTHER COMPOUNDS



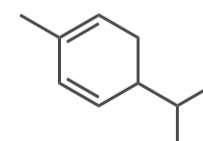
LIMONENE



MYRCENE



CAMPHENE



α-PHELLANDRENE

